



VADC ELITE



**True 2/4 Channel Vibration
Analyzer Cum Alignment Tool**

NPP Compliance | ISO 9001

 **Originally Ukrainian Product**



**ioTECH
SYSTIQUE**

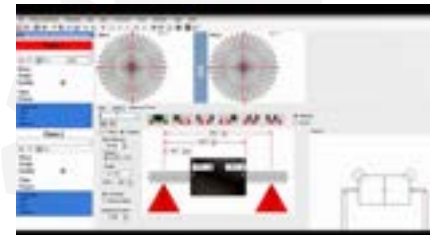
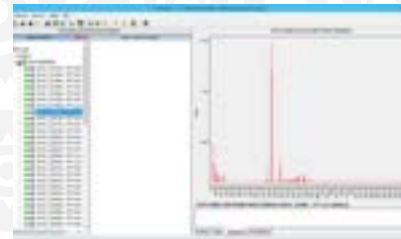
HARDWARE

- IEPE/ICP or charge type accelerometers
- Processor 400 MHz
- Aluminum enclosure with TPE Protector
- Dimensions 210 X 170 X 50 mm
- Accelerometers, cable, mounting magnet, laser / optical tachometer prob, cable & magnetic stand
- Pen drive and software manuals
- Instrument memory 8 / 16 / 32 GB



SOFTWARE FEATURES

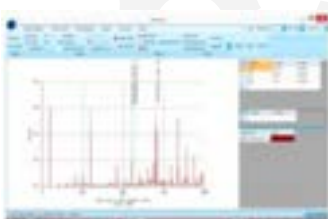
- Simultaneous display of trend and spectrum
- Statistical alarm management
- In-built library of bearings of all manufacturers
- Dashboard to view status, via data in the backend
- Backup storage data
- Equipment hierarchy configuration
- Post collection and FFT range measurement
- Machine history viewer, asset history management, copy and paste of similar machines
- Database management, trending, report generation and bearing analysis
- Standard analysis software for data download / upload from instrument to PC with lifetime validity
- Alarms based on values (overall limit / change limit) for overall as well as unlimited spectral data
- Multi-window plotting with different frequency range for analysis



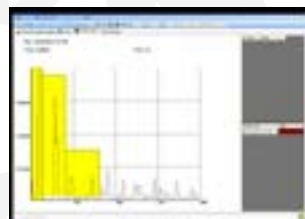
Single & Dual plane balancing



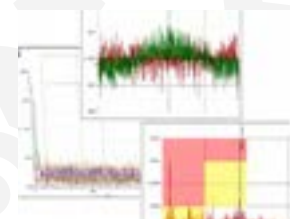
Fast, simple navigation with hierarchy



Versatile reporting with word / excel formats

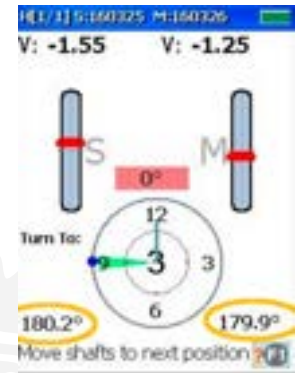
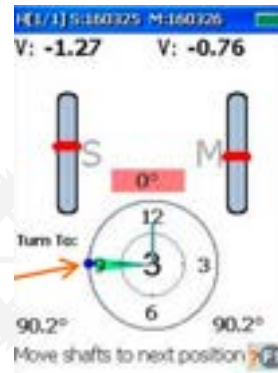
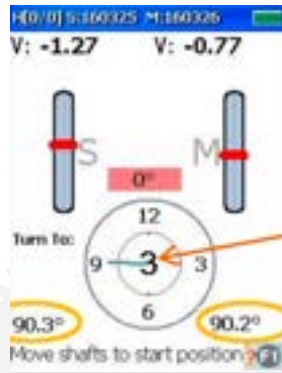


Database management with 2D & 3D trend pilot



Easy management of display toolbars / graphs

LAZER SHAFT ALIGNMENT SYSTEM TEMPERATURE SENSOR



FEATURES - TECHNICAL SPECIFICATIONS

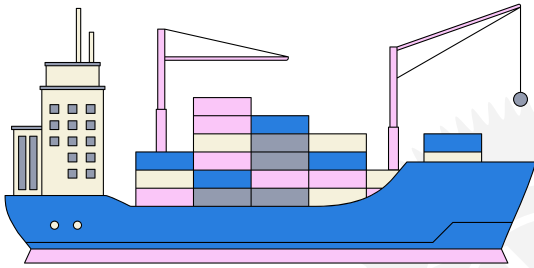
- Display TFT1/4 VGA 320X240 with built-in backlight, sunlight readable 3.5"

Measured & Detection Parameters

- Acceleration, velocity, displacement & dynamic
- Real time Time Waveform, FFT spectrums, enveloping & overall amplitude on single sensor
- Simultaneous 4 channel spectrum display
- The MCSA of the machine for fault frequencies
- Condition monitoring & induction fault motors
- Detection RMS, peak, peak to peak, & true peak
- Amplitude 0-peak, true peak, peak-peak RMS
- Tacho range 10...200,000 rpm
- Accuracy – $\pm 0.1\%$ and $\pm 1\text{rpm}$
- Frequency range independently selectable F min / F max, 0.5 Hz up to 50 kHz, with anti-aliasing filter
- Window: Hanning, Blackman, rectangular & flat
- Withstands humidity, temperature & drop impact
- Trigger: External, Internal, Free Run. Units- English/ Metric

- Laser Alignment functions with transducers
- AD conversion 24 bits | Dynamic range: 106dB
- Channels: 2 or 4 analog channels and one additional channel for the tachometer probe
- Memory: 8GB PC Communication Interface: USB
- Operating Temperature: 0°C to 50°C
- IP 65 & CE certification
- Impact-resistant ABS enclosure / TPE protector
- Dimensions: 215 x 100 x 40mm. Weight: 0.4 kg
- Rechargeable Li-Ion, up to 8 hrs continuous operation and includes battery charger module
- Resolution: 100 - 25,600 lines
- Pen drive with software, manuals
- Vibration sensor: 3-axis measurement
- All channels are individually configurable for different frequency ranges, windowing, average type, and synchronous operations
- Alphanumeric comments (notepad utility) for any special observation during data collection

APPLICATIONS



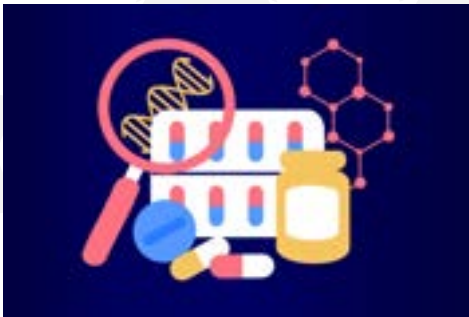
Shipping & Vessels



Power Generation



Engineering Services



Pharmaceutical



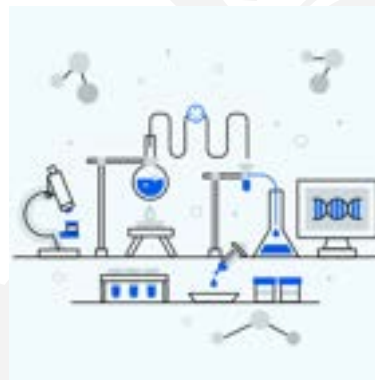
Desalination Plants



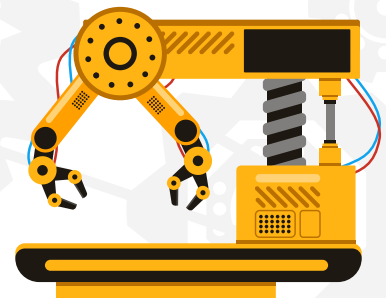
Pulp & Paper



Oil & Gas



Chemical



Processing Industries

And more...